

MIA Public Practice Programme E-Learning

E-Learning registration is open throughout the year

This intensive Public Practice Programme is a strategic initiative of the Institute in developing potential public practitioners and helping them to achieve long-term success.

This specially designed Public Practice Programme is mandatory for members who wish to apply for a practising certificate in order to provide public practice services.

It provides a common platform for competency self-assessment and encourages public practitioners to engage in continuous learning so as to bridge the competency gap, if any, and keep abreast of new developments in the profession.

To align with the changing landscape of the industry, the programme has been revised to meet the needs of audit and non-audit practitioners, with the inclusion of brand-new content and compulsory e-Learning programme and assessments prior to the workshop.

Successful completion of the e-Learning programme and assessments, in addition to attendance at the workshop, has formed the new pre-requisite for members looking to obtain a practising certificate.



MIA Public Practice Programme E-Learning

PROGRAMME STRUCTURE

The e-Learning programme introduces members to the major elements relating to setting up and operating a public practice, including the regulatory environment.

The primary objective is to uphold public interest for the benefit of society as a whole. There is a review of the principal laws and regulations which apply to public practice such as the MIA By-laws and anti-money laundering procedures. The practising information and support that members can get from MIA/IFAC are also covered in this segment.

The e-Learning programme will be completed once the online assessment of each module is finished.

OBJECTIVES

To facilitate the change of mindset (from an employee to an entrepreneur) and ensure that members have taken into consideration important matters, before entering public practice.

LEARNING OUTCOME

This programme aims to help you:

- Define the kind of partner you want to be and your ideal type of practice (range of services and clients)
- Identify key competencies and critical success factors to achieve overall goals (staffing, systems, use of technology, practice management & marketing)
- Set strategies to profitably operate and grow a sustainable practice
- Design systems and processes to manage risks while ensuring quality deliverables

WHO SHOULD ATTEND

This programme is mandatory for those who wish to apply for a practising certificate.

METHODOLOGY

A highly interactive 'Do it at your comfort' self learning session with assessment, quizzes, reading materials and videos.

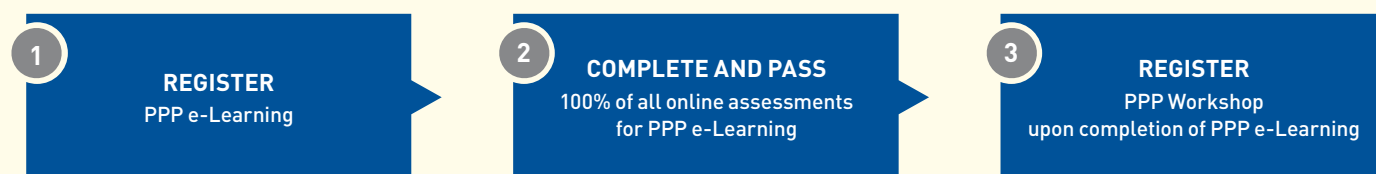
PROGRAMME OUTLINE

Participants are required to complete a pre-course reading which consists of four online modules covering topics:

- **Module 1**
An Overview of Regulatory Environment & MIA By-laws (on Professional Ethics, Conduct and Practice)
- **Module 2**
Anti-Money Laundering, Countering Financing of Terrorism and Targeted Financial Sanctions for Designated Non-Financial Businesses and Professions (DNFBPs) & Non-Bank Financial Institutions (NBFIs) (AML/CFT and TFS for DNFBPs and NBFIs)
- **Module 3**
Practising in Malaysia
- **Module 4**
IES 8: Professional Competence for Engagement Partners Responsible for Audits of Financial Statements (Revised)

Online modules must be completed at least 3 days before attending the Public Practice Programme workshop.

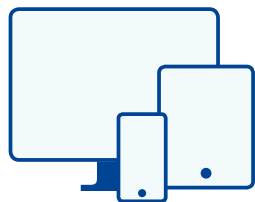
REGISTRATION PROCESS FOR THE PUBLIC PRACTICE PROGRAMME



Reminders:

1. PPP e-Learning programme is a pre-requisite programme for PPP Workshop.
2. PPP e-Learning programme must be completed at least 3 days before registering for the PPP Workshop.
3. Participant will have up to 3 months to complete PPP e-Learning programme upon registration and will require a 100% pass rate.
4. Upon completion of PPP e-Learning programme, the participant will have 6 months time to register for the PPP Workshop. Once exceeded 6 months period, the participant will need to re-take the PPP e-Learning programme in order to attend the PPP Workshop.
5. Certificate of Attendance will be issued after the completion of PPP e-Learning programme & Workshop [3 hours + 9 hours (non-audit) / 12 hours (audit)]. The total CPE hours will be credited in the Membership system within 2 weeks. Participants will only be entitled to the CPE hours upon attending the entire duration of the programme. CPE hours will not be accorded for partial attendance.
6. Participants who have completed both e-PPP and PPP (Non-audit) and subsequently wish to attend PPP (Audit) are not required to repeat e-PPP. Participants must attend PPP (Audit) within one year from the date of completion of e-PPP.

REGISTRATION PROCESS

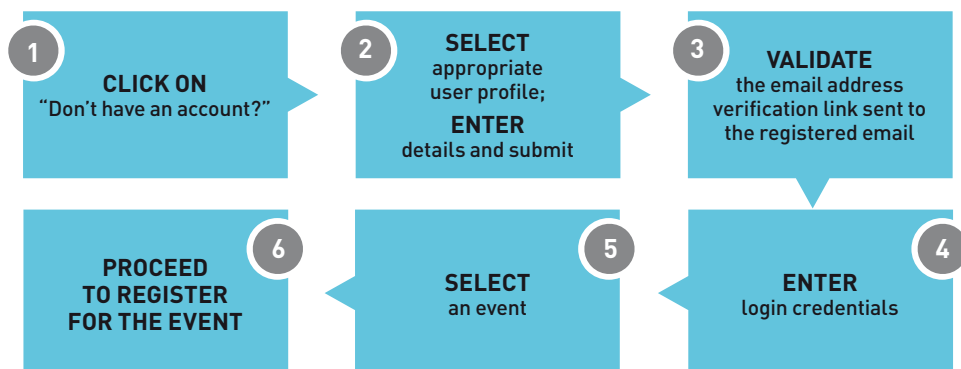


- To view more events and download the full brochure, please visit:
pd.mia.org.my
- Search and select the event
- Click 'Register' to experience the new system by continuing with the respective steps below:

EXISTING USER



NEW USER



For any assistance, please call (8.45am-5.30pm, Monday-Friday)

MIA Help Desk @ 603-2722 9000

TERMS & CONDITIONS

E-LEARNING FEE

- Fee is payable to MALAYSIAN INSTITUTE OF ACCOUNTANTS
 - Individual Registration: Full payment shall be made at the point of online registration.
 - Corporate Registration: Full payment shall be made within thirty (30) days from the date of the Proforma Invoice.
- Access to join the e-learning shall be granted only upon full payment as per the above requirement.

E-LEARNING ACCESS LINK & VALIDITY PERIOD

- The Access Link will be emailed within 5 working days upon full payment of the fee.
- The Access Link is unique and should not be forwarded/shared with others.

PARTICIPANT'S CLASSIFICATION AND INFORMATION

Category: Corporate/Individual

- Please select the participant classification carefully as it determines the fee payable. No alteration will be allowed upon registration.
- The information on Corporate/Individual provided shall be deemed true and correct. No alteration will be allowed upon registration.

METHODOLOGY, CERTIFICATE OF ATTENDANCE AND CPE CREDIT HOURS

- For e-Learning, participants will be issued an e-certificate only upon completion of entire module & self-assessment quizzes.
- CPE credit hours for MIA members will be credited into the MIA Member Service Portal within 5 working days upon submission of participation completion certificate.
- The e-certificate and CPE credit hours will not be awarded if participants fails to provide the completion certificate.

COPYRIGHT

No part of the e-material may be reproduced in any form, stored in a retrieval system, transmitted by any means electronically or mechanically, photocopied, or recorded, without the prior permission of the author or the Malaysian Institute of Accountants (MIA).

DATA PROTECTION

Personal Data is gathered in accordance with the Personal Data Protection Act 2010 (Act 709).

DISCLAIMER

Malaysian Institute of Accountants (MIA) reserves the right to change the speaker(s), date(s), time(s) and to cancel the programme should circumstances beyond its control arise. MIA shall not be responsible for any costs, damages or losses incurred by the participant due to the changes and/or cancellation. MIA also reserves the right to make alternative arrangements without prior notice should it be necessary to do so. Upon registering, you are deemed to have read and accepted the terms and conditions herein.

PROGRAMME FEES

E-LEARNING (PRE-WORKSHOP)

Member	RM 150
Non-Member	RM 200

Preferred Payment: Pay with MIA-CIMB Affinity Credit Card.

PROGRAMME DETAILS & REGISTRATION

E-LEARNING (PRE-WORKSHOP)

E-Learning registration is open throughout the year

Contact : Theeba
Tel : 03 2722 9200
Fax : 03 2722 9009
Email : elearning@mia.org.my
Address : Malaysian Institute of Accountants
Dewan Akauntan
Unit 33-01, Level 33
Tower A, The Vertical
Avenue 3, Bangsar South City
No. 8, Jalan Kerinchi
59200 Kuala Lumpur